

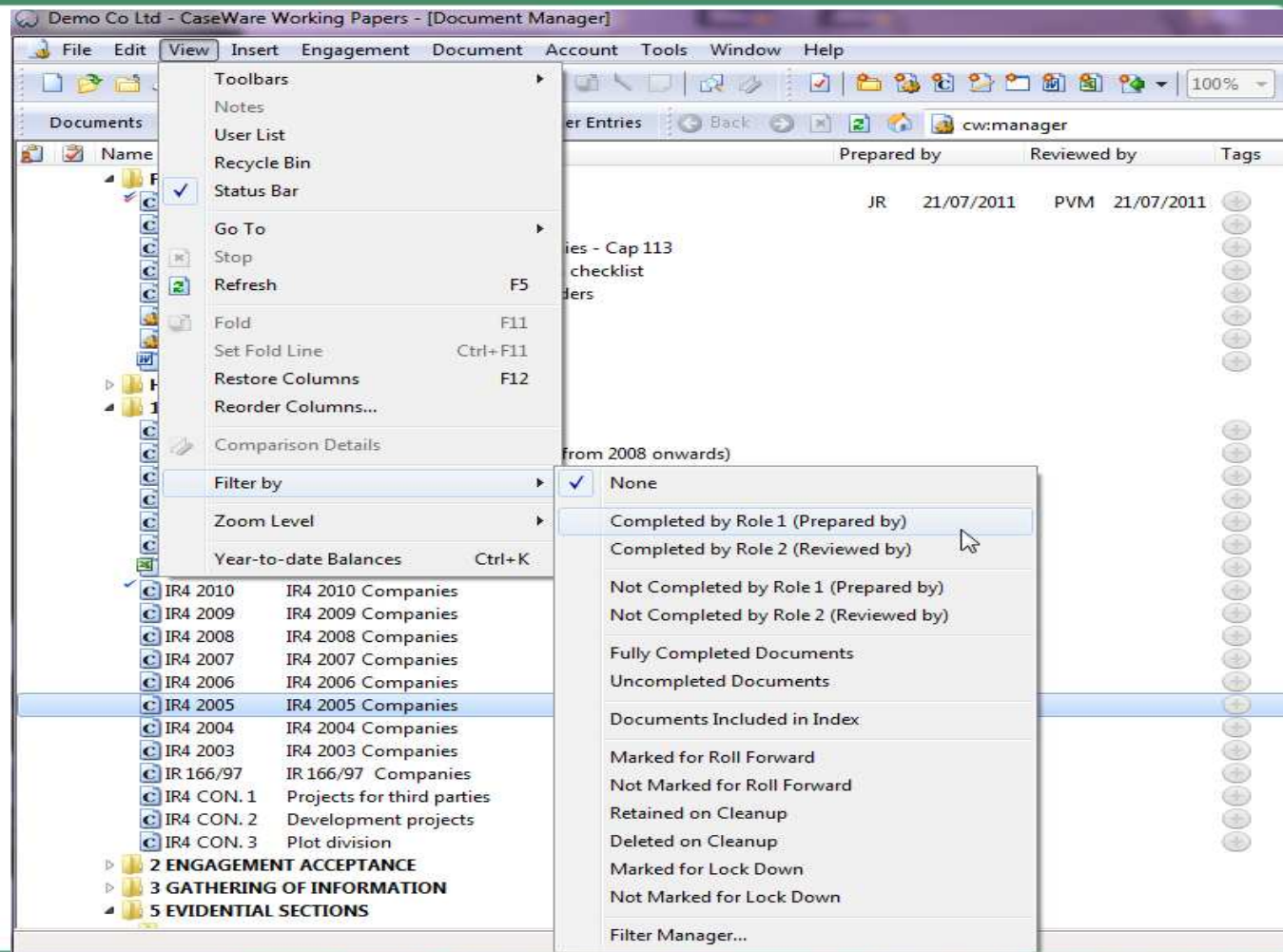
- **CaseWare Working Papers 2010 Features**
- **CaseWare Working Papers 2011 Upcoming Features/ Enhancements**

CaseWare Working Papers 2010 Features

- **Document Manager Filters**
- **Tags**
- **Recycle Bin**
- **Header Freeze**
- **Roles Dependency**
- **Hyperlink Reference**
- **Internal Image Viewer Note Annotations**
- **CaseWare SmartSync add-in**

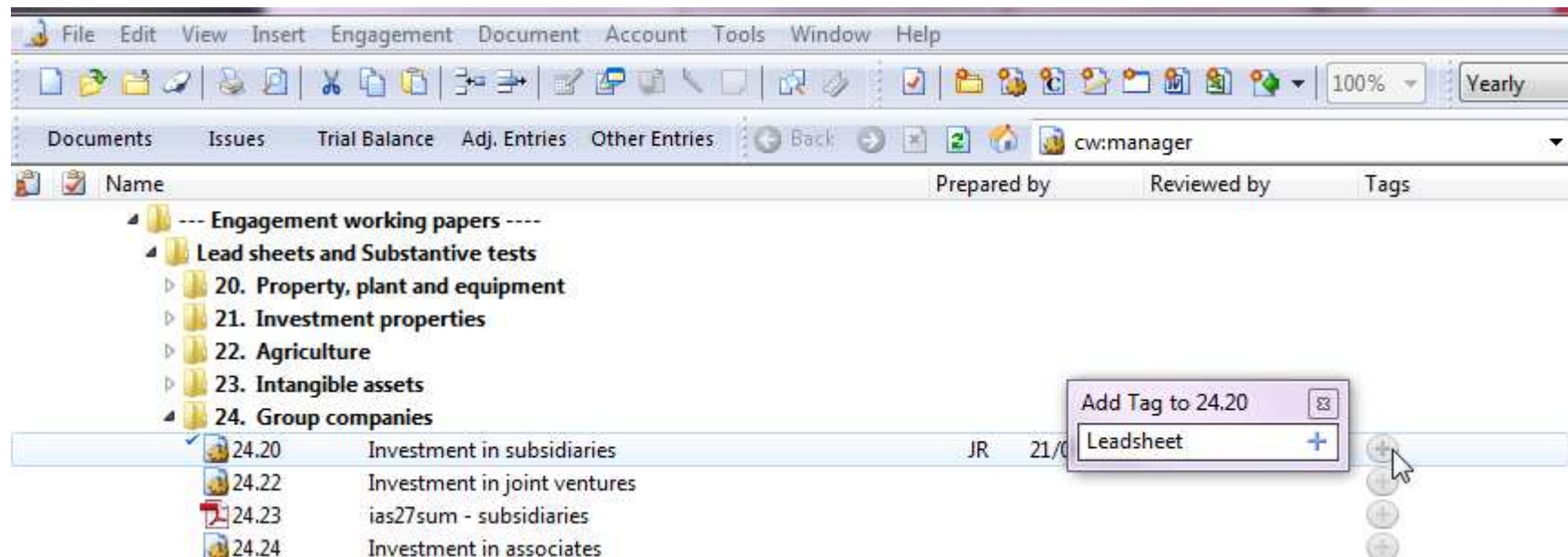
- **Document Manager Filters**

Users are permitted to design and customize their own filters for the Document Manager.



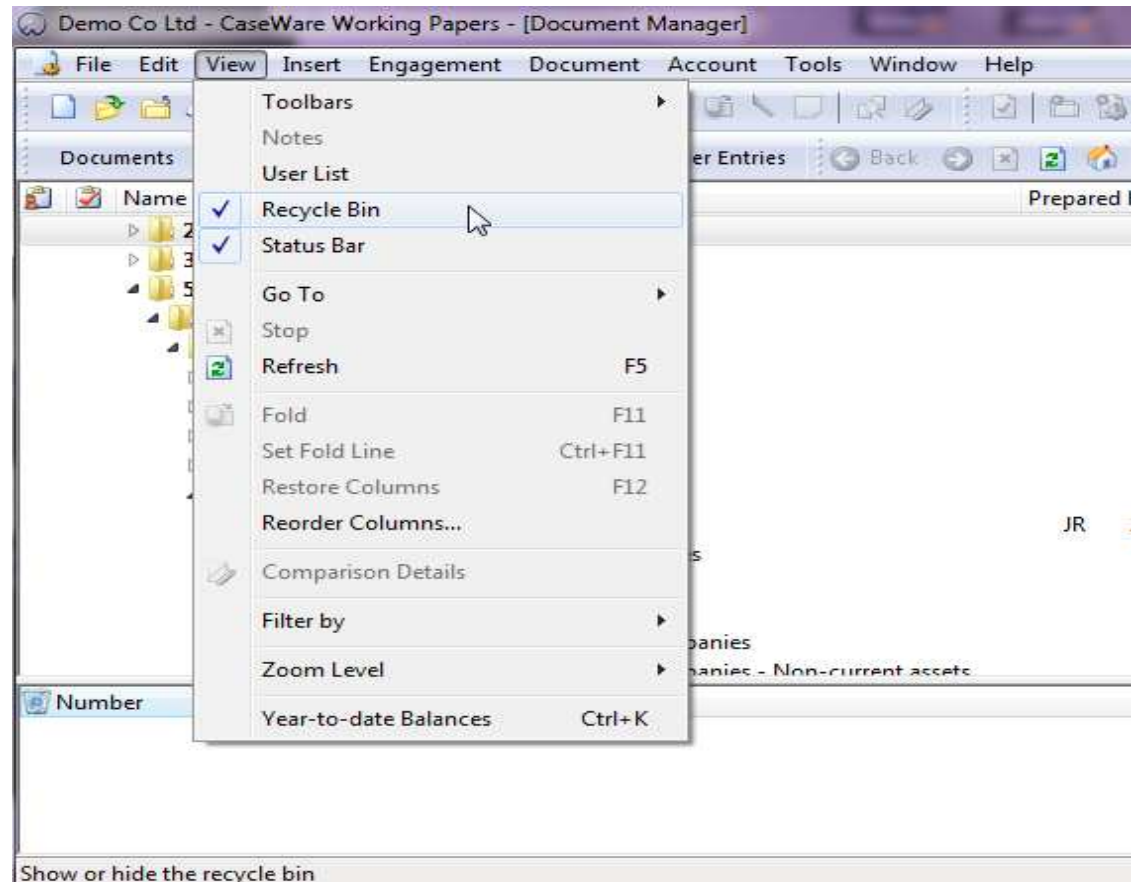
- **Tags**

Users can associate keyword (tags) with documents on the Document Manager. Tags can be used in conjunction with the new Document Manager Filter feature.



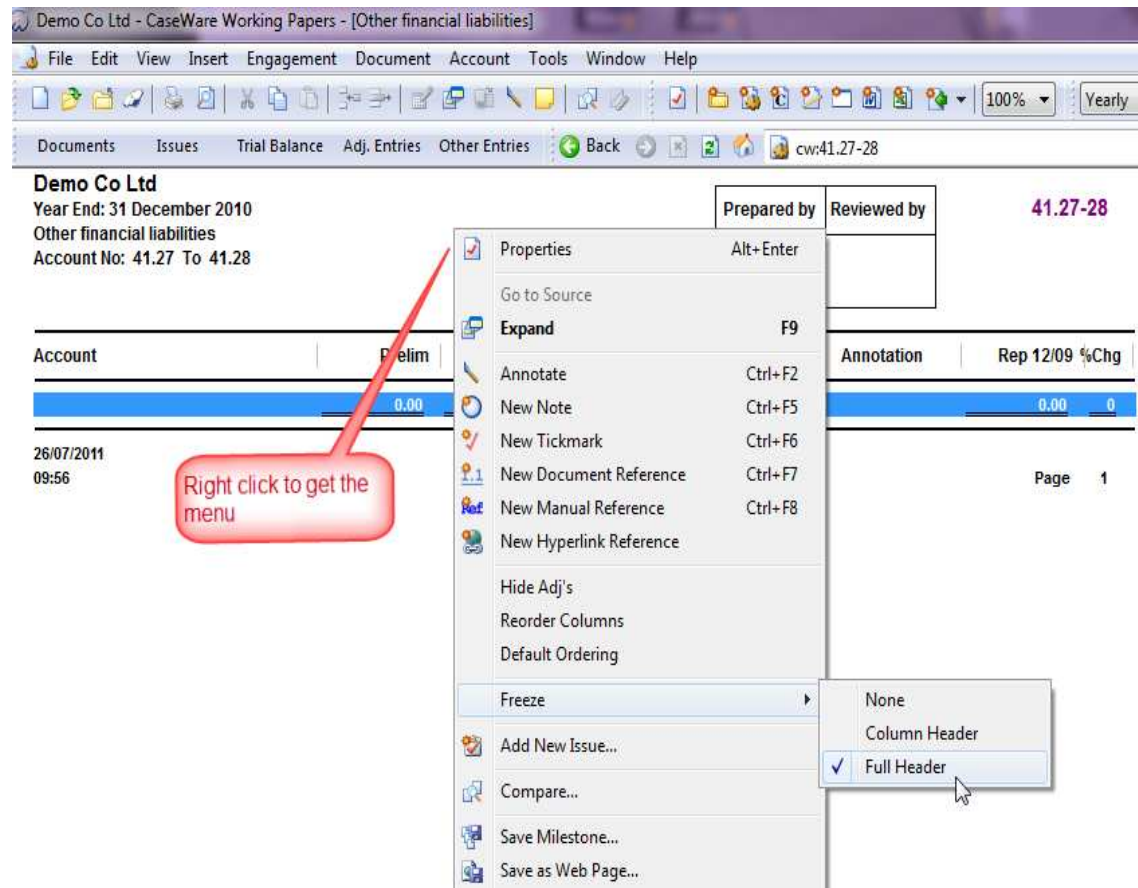
- **Recycle Bin**

Recycle Bin has been created to temporarily store documents that have been deleted, whether accidentally or intentionally from the engagement file.



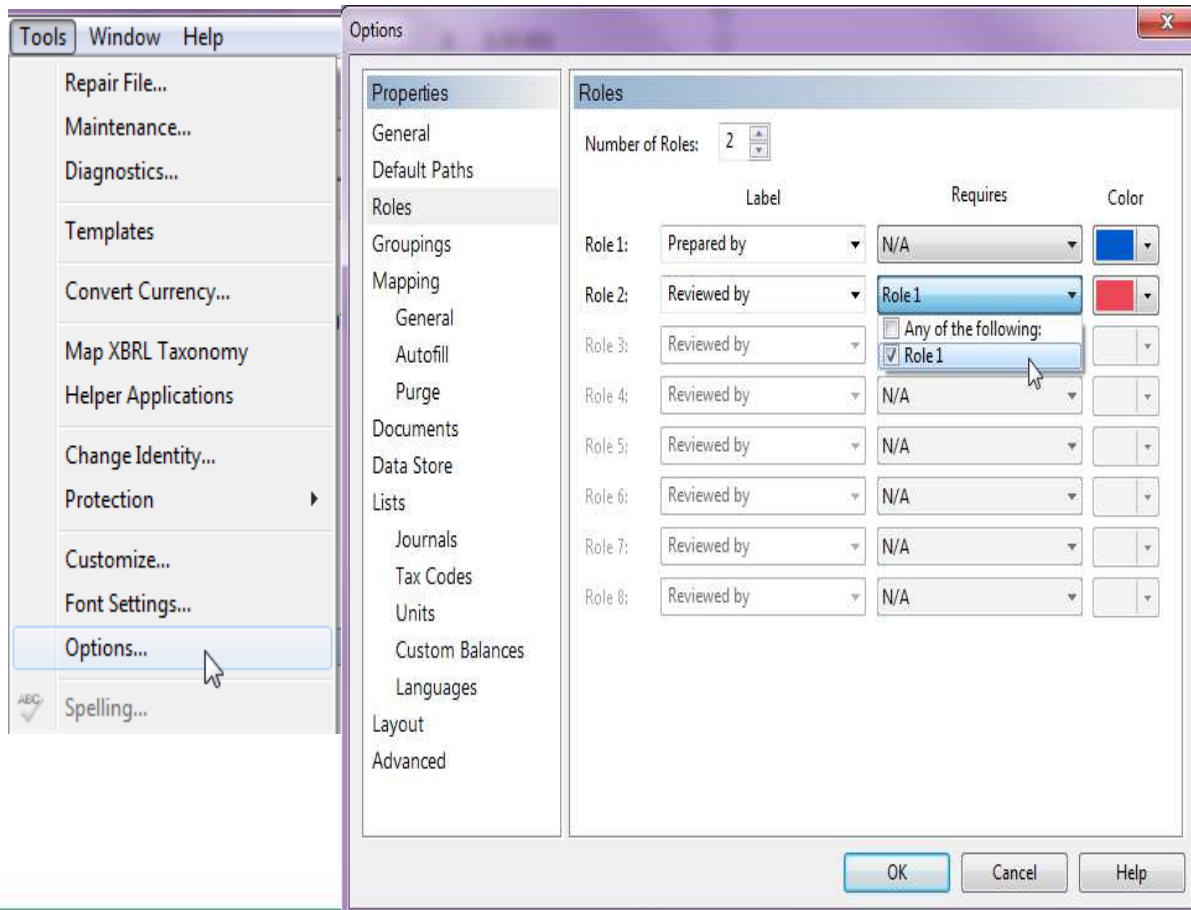
- **Header Freeze**

The ability to freeze the column headings in automatic documents. Within the right-click context menu for automatic documents, new options were added that allow users to freeze the column header or full header.



- Roles Dependency**

Rules can be established governing the sign off of Roles for documents on the Document Manager. Dependency can be easily define by indicating which roles need to be completed prior to the sign off of a specific role.

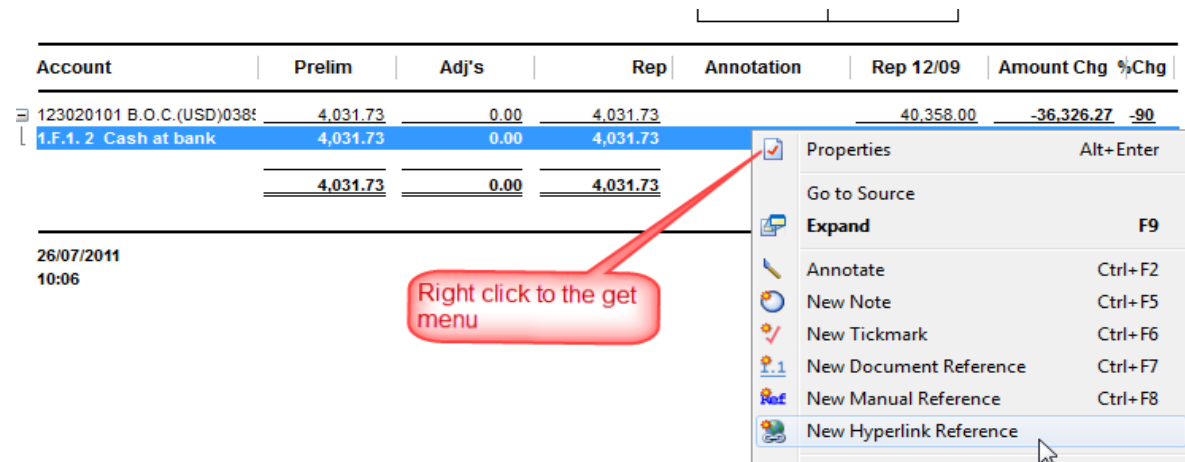


- ## Hyperlink Reference

Introduced is a new type of annotation - a Hyperlink Reference. With this type of annotation, users can jump to any URL or location within a Word, Excel, or CaseView document.

Account	Prelim	Adj's	Rep	Annotation	Rep 12/09	Amount Chg	%Chg
123020101 B.O.C.(USD)038	4,031.73	0.00	4,031.73		40,358.00	-36,326.27	-90
1.F.1.2 Cash at bank	4,031.73	0.00	4,031.73				
	<u>4,031.73</u>	<u>0.00</u>	<u>4,031.73</u>				

26/07/2011
10:06



Hyperlink Reference

Label:

Link Type: **Hyperlink**

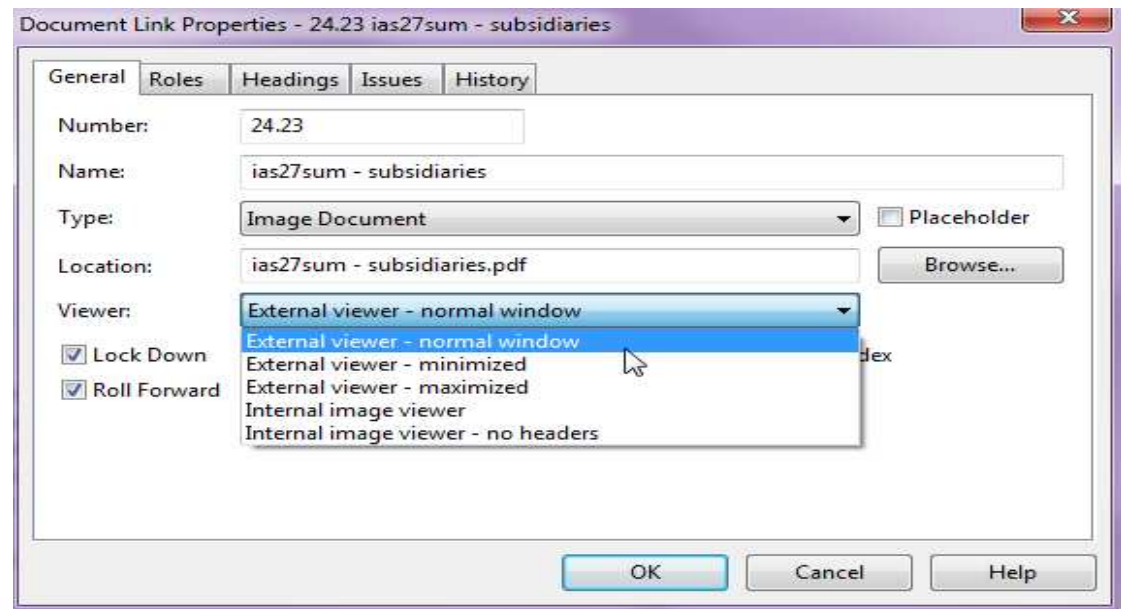
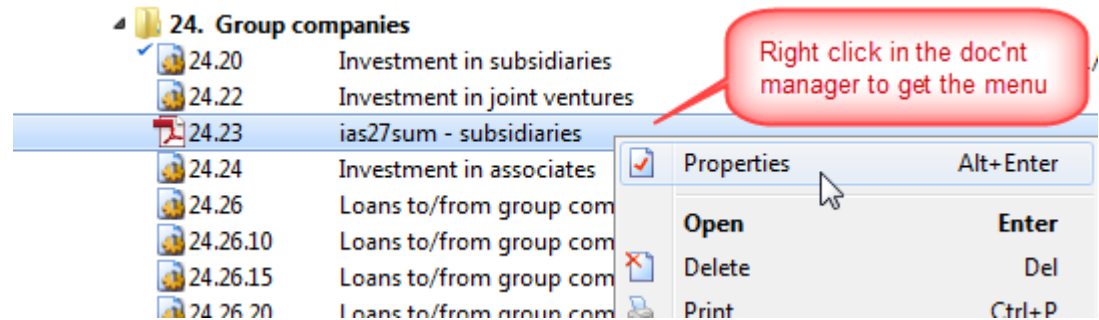
Hyperlink: **CaseView Document**

Show on All Documents (Global)

OK Cancel Help

- ## Internal Image Viewer Note Annotations

Users can now show notes as text boxes in image documents. When inserting an image as an external document, users can select to use the internal image viewer so that the image will show within the Working Papers window and not in an external application associated with the image format.



CaseWare SmartSync Add-in

- Combined with Working Papers, this revolutionary tool provides unprecedented gains in productivity and efficiency, whilst eliminating geographic boundaries.
- No matter where team members are, SmartSync keeps everyone's work in perfect harmony.
- Thanks to SyncSelect technology, only data that has changed will be updated, saving both time and bandwidth.
- Each change is replicated to everyone at once, ensuring that each person is looking at the latest information.
- Using built-in PeerSync functionality, staff at the same client site can collaborate on a file without having to send changes back and forth to the master copy.

CaseWare Working Papers 2011 Upcoming Features/ Enhancements

- **Document Specific Roles and Role Sets**
- **Separate Permissions to Lock / Unlock a Client File**
- **Annotations - Excel Hyperlinks**
- **Annotations – Highlighter**
- **Image Documents**
- **Filter Toolbar**

CaseWare Working Papers 2011 Features

- **Document Specific Roles and Role Sets**
Role Sets can be created and the number of Roles can now be specified at the document level, to support various kinds of functional teams within an engagement.
- **Separate Permissions to Lock/Unlock a Client File**
In previous versions of Working Papers, the same permission enabled users to lock or unlock a file through the Tools | Protection menu. This group access has now been split for the lock and unlock functions when setting up group rights.

CaseWare Working Papers 2011 Features

- **Annotations - Excel Hyperlinks**

Hyperlink references to Excel documents can now target a named cell or a named range of cells.

- **Annotations - Highlighter**

Annotations can now be highlighted to provide a visual cue in the interface

CaseWare Working Papers 2011 Features

- **Image Documents**

Ability to have new image documents automatically use the preferred type of viewer when they are created, based on the last viewer selection that was made for that document type.

- **Filter Toolbar**

A filter toolbar has been added to the top of the Document Manager to provide access to filter controls as well as a visual indication of any filter currently applied to the Document Manager.